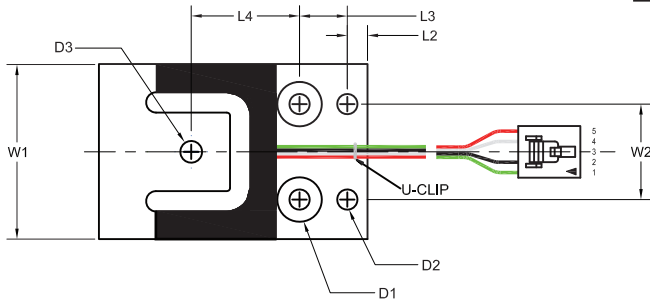
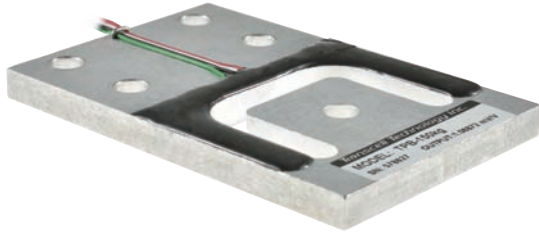
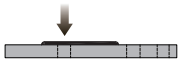


Planar Beam



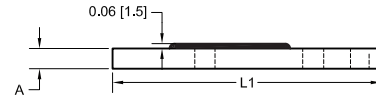
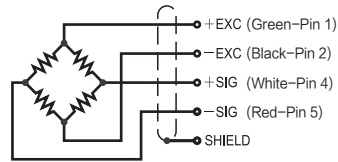
Capacities

3.75kg, 7.5kg, 15kg, 37.5kg, 75kg, 150kg, 375kg

Features

- Tablet Type load cell
- Easy to install, stable & reliable
- Aluminum construction
- Suitable for medical weighing, industrial weighing

Schematic



Capacities		A	L1	L2	L3	L4	W1	W2	D1	D2	D3
3.75kg	in	0.08	2.76	0.19	0.55	1.1	1.53	1.09	0.3	0.2	0.17
	mm	2	70	4.9	14	28	39	27.8	7.62	5.1	4.2
7.5kg	in	0.1	2.76	0.19	0.55	1.1	1.53	1.09	0.3	0.2	0.17
	mm	2.5	70	4.9	14	28	39	27.8	7.62	5.1	4.2
15kg	in	0.16	2.76	0.19	0.55	1.1	1.53	1.09	0.3	0.2	0.24
	mm	4.1	70	4.9	14	28	39	27.8	7.62	5.1	6.2
37.5kg	in	0.19	3	0.24	0.59	1.15	1.75	1.18	0.55	0.25	0.24
	mm	4.8	76.2	6	15	29.3	44.5	30	14	6.6	6.2
75kg	in	0.25	3.32	0.25	0.59	1.34	2.16	1.18	0.55	0.25	0.32
	mm	6.4	84.4	6.4	15	34	54.8	30	14	6.6	8.2
150kg	in	0.31	4.22	0.31	0.9	1.81	2.75	1.75	0.55	0.32	0.32
	mm	7.9	107.3	7.8	22.9	45.9	69.9	44.5	14	8.1	8.2
375kg	in	0.5	4.7	0.36	1	2.07	3	2	0.55	0.39	0.32
	mm	12.7	119.4	9.1	25.4	52.6	76.1	50.8	14	9.8	8.2

Specifications

Rated Output	0.9mV/V ±0.1%	Safe Temp. Range	-40°C to + 65°C
Zero Balance	±5% of rated output	Temp. Compensated	-10°C to + 40°C
Creep after 30 minutes	±0.017% of rated output	Safe Overload	300%
Nonlinearity	±0.017% of rated output	Ultimate load	400%
Hysteresis	±0.017% of rated output	Input Impedance	1180 ohm ± 50 ohm
Temp. effect on output	≤0.02% of applied output /°C	Output Impedance	1000 ohm ± 5 ohm
Temp. effect on zero	≤0.01% of rated output /°C	Insulation Resistance	≥5000 M ohm (50V DC)
Cable Length	1m (3.75kg-15kg) / 1.5m (37.5kg-375kg)	Rated Excitation	5V DC/AC
Accuracy class	C3	Maximum Excitation	15V DC/AC
Calibration in mV/V/Ω	0.05%	Seal type	IP67
Combined error	±0.02% of rated output		