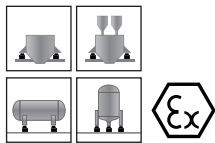
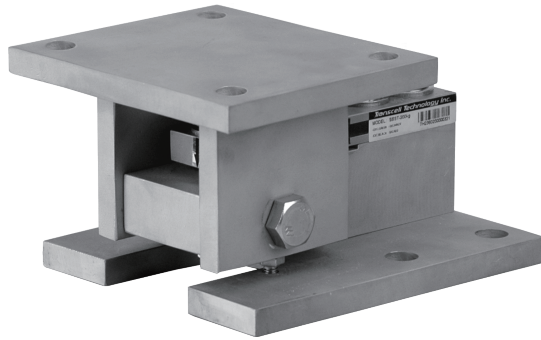


## Weighing Mount



### Capacities

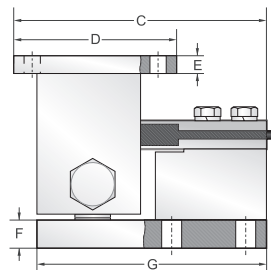
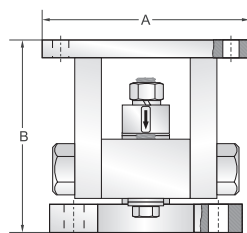
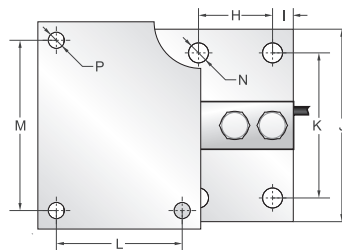
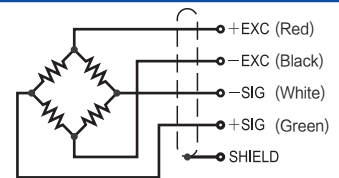
200kg, 500kg, 1000kg, 2000kg

### Features

- Alloy steel construction / stainless steel construction (option)
- Mounts to floor or structural support directly
- SBST (single ended shear beam stainless steel load cell) installed
- Suitable for baggage systems and batching systems, etc.

### Schematic

Red : + input  
 Black : - input  
 White : - output  
 Green : + output



Capacities		A	B	C	D	E	F	G	H	I	J	K	L	M	N	P
200kg/500kg	mm	130	103	172.3	110	12	19	155	50	14	130	98	80	100	4xØ13.5	4xØ11
1t/2t	mm	140	130	172.3	110	12	19	155	50	14	130	98	85	115	4xØ13.5	4xØ11

### Specifications

Rated Output	2.0mV/V±0.1%	Safe Temp. Range	-10°C to + 70°C
Zero Balance	±1% of rated output	Temp. Compensated	-10°C to + 40°C
Creep after 30 minutes	±0.03% of rated output	Safe Overload	150%
Nonlinearity	±0.03% of rated output	Ultimate Overload	300%
Hysteresis	±0.02% of rated output	Input Impedance	1100 ohm ± 20 ohm
Repeatability	±0.02% of rated output	Output Impedance	1090 ohm ± 5 ohm
Temp. effect on output	≤0.002% of applied output/°C	Insulation Resistance	≥5000 M ohm (50V DC)
Temp. effect on zero	≤0.002% of rated output/°C	Rated Excitation	10V DC/AC
Wire Length	3m	Maximum Excitation	15V DC/AC
Wire Material	Red(+ E) Black(- E) White(- S) Green(+ S)		