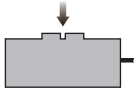


## Pancake Type



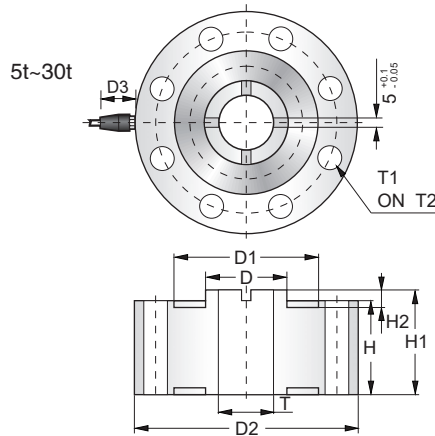
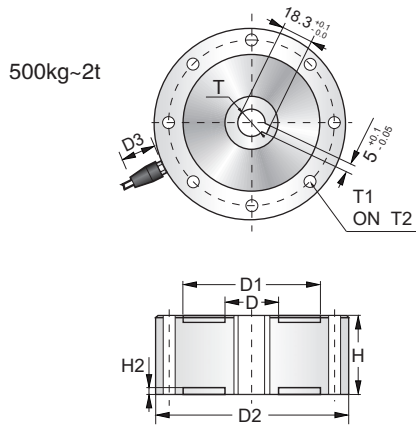
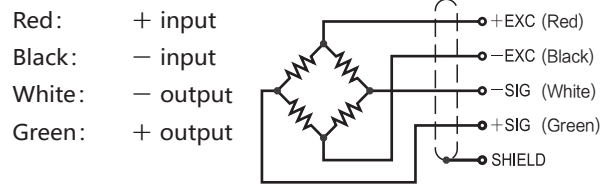
### Capacities

500kg, 1t, 2t, 5t, 10t, 20t, 30t

### Features

- Pancake type load cell
- Alloy steel construction
- High accuracy
- High stability
- Easy to install
- Protected against corrosion by nickel-plated treatment
- Suitable for testing machine

### Schematic



Capacities		D	D1	D2	D3	H	H1	H2	T	T1	T2
500kg~2t	mm	Ø31	Ø80	Ø112	32	46	-	4	Ø16	8×Ø7	Ø96
	inch	Ø1.22	Ø3.15	Ø4.41	1.26	1.81	-	0.16	Ø0.63	8×Ø0.28	Ø3.78
5t~10t	mm	Ø48	Ø84	Ø130	32	55	61	4	Ø32	8×Ø14	Ø105
	inch	Ø1.89	Ø3.31	Ø5.12	1.26	2.17	2.4	0.16	Ø1.26	8×Ø0.43	Ø4.13
20t~30t	mm	Ø72	Ø130	Ø182	32	80	86	4	Ø39	8×Ø15	Ø154
	inch	Ø2.83	Ø5.12	Ø7.17	1.26	3.15	3.39	0.16	Ø1.54	8×Ø0.59	Ø6.06

Specification			
Rated Output	3.0mV/V ±0.25%	Safe Temp. Range	-20°C to + 60°C
Zero Balance	±1% of rated output	Temp. Compensated	-10°C to + 40°C
Creep after 30 minutes	±0.03% of rated output	Safe Overload	150%
Nonlinearity	±0.05% of rated output	Input Impedance	385 ohm ± 5 ohm
Hysteresis	±0.05% of rated output	Output Impedance	350 ohm ± 3 ohm
Repeatability	±0.02% of rated output	Insulation Resistance	≥5000 M ohm (50V DC)
Temp. effect on output	≤0.0015% of applied output/°C	Rated Excitation	10V DC/AC
Temp. effect on zero	≤0.0026% of rated output/°C	Maximum Excitation	15V DC/AC
Wire Length	3m	Wire Material	TPR cable
Wire Specification	24AWG	Wire Type	Shielding net four core