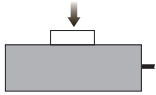


Pancake Type



Capacities

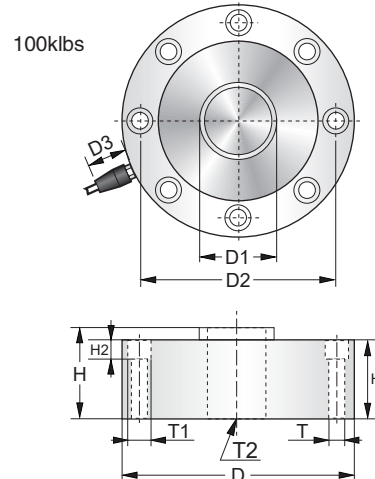
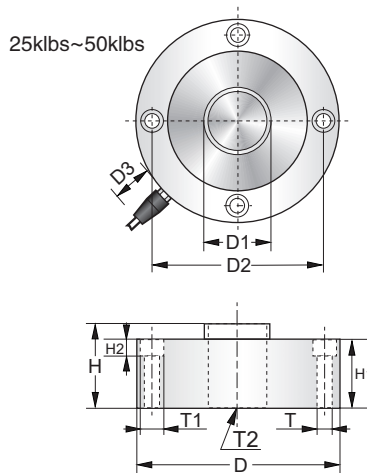
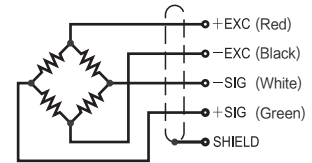
25klbs, 50klbs, 100klbs

Features

- Pancake type load cell
- Alloy steel construction
- High accuracy
- High stability
- Easy to install
- Protected against corrosion by nickel-plated treatment
- Suitable for testing machine

Schematic

Red: + input
 Black: - input
 White: - output
 Green: + output



Capacities		D	D1	D2	D3	H	H1	H2	T	T1	T2
25klbs/50klbs	mm	Ø120.7	Ø38.9	Ø101.6	32	53.1	41.1	9.7	4xØ8.7	4xØ13.5	M32x1.5
	inch	Ø4.75	Ø1.53	Ø4	1.26	2.12	1.62	0.38	4xØ0.34	4xØ0.53	
100klbs	mm	Ø138	Ø50.4	Ø116.8	32	65.8	50.8	11	8xØ10.3	8xØ16.5	M40x1.5
	inch	Ø5.43	Ø1.98	Ø4.6	1.26	2.59	2	0.43	8xØ0.41	8xØ0.65	

Specification

Rated Output	4.0mV/V ±0.25%	Safe Temp. Range	-20°C to + 60°C
Zero Balance	±1% of rated output	Temp. Compensated	-10°C to + 40°C
Creep after 30 minutes	±0.03% of rated output	Safe Overload	150%
Nonlinearity	±0.05% of rated output	Input Impedance	385 ohm ± 5 ohm *1
Hysteresis	±0.05% of rated output	Output Impedance	350 ohm ± 3 ohm *2
Repeatability	±0.02% of rated output	Insulation Resistance	≥5000 M ohm (50V DC)
Temp. effect on output	≤0.0015% of applied output/°C	Rated Excitation	10V DC/AC
Temp. effect on zero	≤0.0026% of rated output/°C	Maximum Excitation	15V DC/AC
Wire Length	3m	Wire Material	TPR cable
Wire Specification	24AWG	Wire Type	Shielding net four core

Note: *1 770±10Ω (100klbs) , *2 700±5Ω (100klbs)