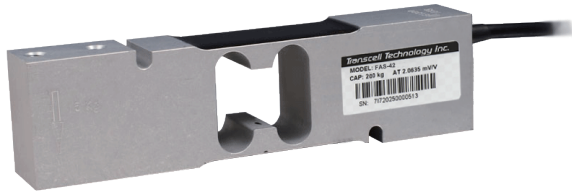


## Single Point



### Capacities

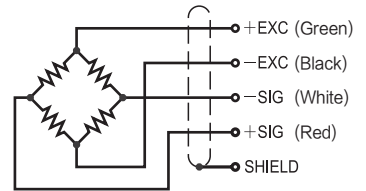
10kg, 15kg, 20kg, 30kg, 50kg, 75kg, 100kg, 150kg, 200kg

### Features

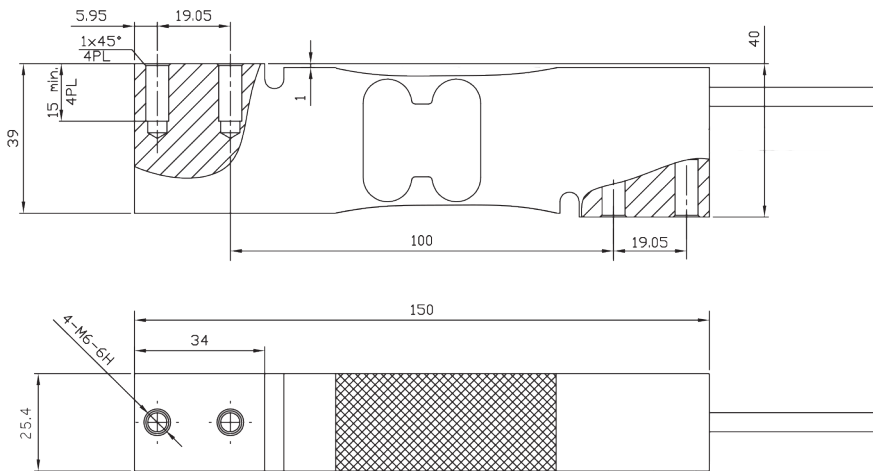
- Single point load cell
- Anodized aluminum construction
- Easy to install
- IP66 protection
- High accuracy
- High stability
- Suitable for retail, bench and counting scales, etc.

### Schematic

Green: + input  
 Black: - input  
 White: - output  
 Red: + output



Maximum platform: 400 × 400mm



### Specifications

Accuracy Class	C3	C6	Limit Load	>150% of R.C.
Max Number Of Intervals	3000	6000	Break Load	>300% of R.C.
Y=Emax/vmin	7500	10000	Nominal Excitation	10V
Z=Emax/(2*DR)	3000	6000	Max. Excitation	15V
Eccentric Loading error	±0.0057 %/10 °C	±0.0024 %/10 °C	Compensation Circuit Type	Balanced Bridge
Sensitivity	2.0mV		Input Impedance	406 Ohm ± 15 Ohm
Zero Balance	±0.10mV/V		Output Impedance	350 Ohm ± 3 Ohm
Sensitivity Tolerance	±0.20mV/V		Insulation Resistance	> 2000 M ohm (50V DC)
Protection Class	IP66		Cable Length	2.0m
Nominal Temp. Range	-10 to +40°C		Cable Type	4x26 AWG, Black PVC Jacket
Service Temp. Range	-30 to +70°C		Color Code	Red(+S) Black(-E) White(-S) Green(+E)