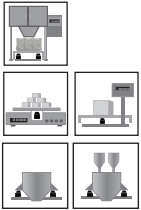


Single Point



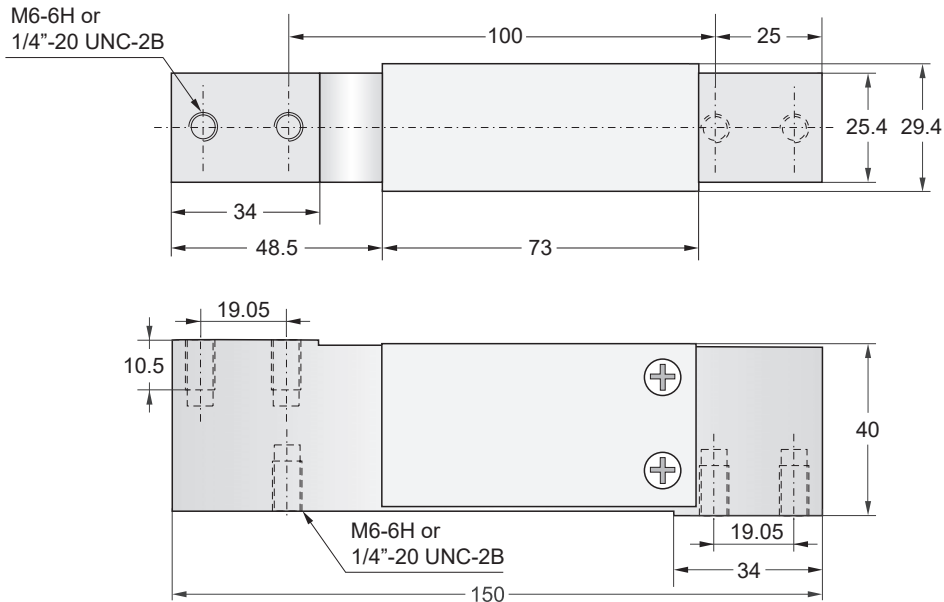
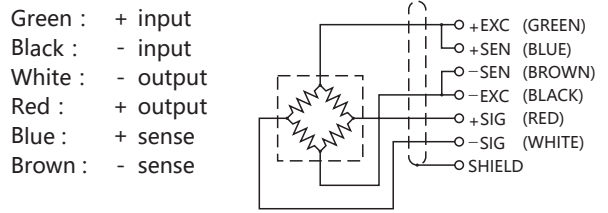
Capacities

5kg, 7kg, 10kg, 15kg, 20kg, 30kg, 50kg, 75kg, 100kg

Features

- Single point load cell
- Aluminum construction
- High accuracy
- High stability
- Easy to install
- Suitable for retail and postal weighing, package weighing systems, parts counting and small hopper scales, bench scales, etc.

Schematic



Specifications			
Rated Output	2.0mV/V±10%	Safe Temp. Range	-30°C to + 70°C
Zero Balance	±10% of rated output	Temp. Compensated	-10°C to + 40°C
Creep after 30 minutes	±0.025% of rated output	Maximum Safe Central Overload	150%
Nonlinearity	±0.03% of rated output	Ultimate Central Overload	300%
Hysteresis	±0.03% of rated output	Input Impedance	415 ohm ± 15 ohm
Repeatability	±0.03% of rated output	Output Impedance	350 ohm ± 3 ohm
Temp. effect on output	≤0.0074% of applied output/°C	Insulation Resistance	≥2000 M ohm
Temp. effect on zero	≤0.006% of rated output/°C	Rated Excitation	10V DC/AC
Cable Length	2m	Maximum Excitation	15V DC/AC
Cable Type	6×26AWG, Black PVC Jacket	Protection	IP54, IP67 Optional