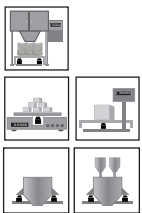
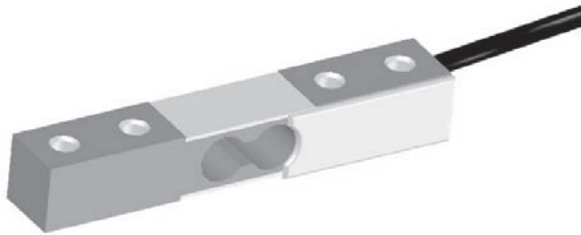


Single Point



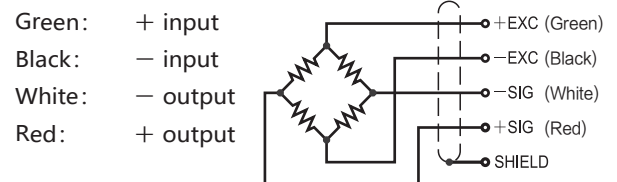
Capacities

0.5kg, 1kg, 3kg, 5kg, 10kg, 15kg, 20kg

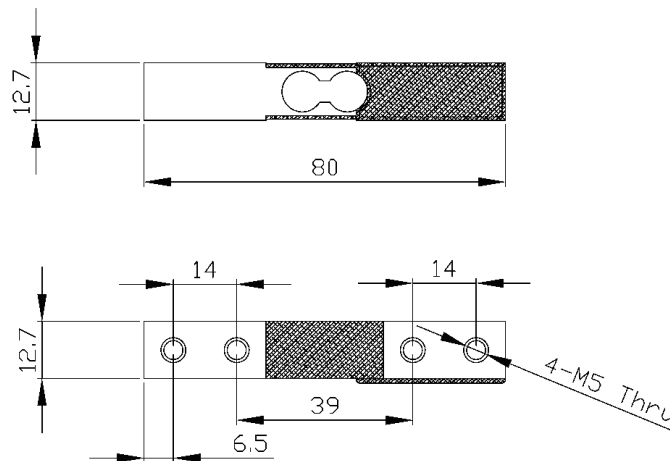
Features

- Single point load cell
- Aluminum construction
- High accuracy
- High stability
- Easy to install
- IP66 protection
- Suitable for low cost platforms, kitchen and pocket scales, etc.

Schematic



Maximum platform: 150X150mm



Specifications			
Rated Output	1.0mV/V±0.05mV/V	Limit load	150% of R.C.
Zero Balance	0.1mV/V	Break Load	300% of R.C.
Creep after 30 minutes	±0.05%	Nominal Excitation	10V
Linearity Deviation	±0.05%	Max. Excitation	15V
Hysteresis	±0.05%	Input Impedance	415 ohm ± 15 ohm
Repeatability	±0.05%	Output Impedance	350 ohm ± 3 ohm
Temp. effect on output	±0.05%/10°C	Insulation Resistance	> 2000M ohm
Temp. effect on zero	±0.05%/10°C	Compensation circuit type	Balanced Bridge
Wire Length	0.25m	Cable type	4x28 AWG, Black PVC Jacket
Nominal Temp. Range	-10°C to + 40°C	Cable Color code	Green(+E) Black(-E) White(-S) Red(+S)
Service Temp. Range	-30°C to + 70°C		